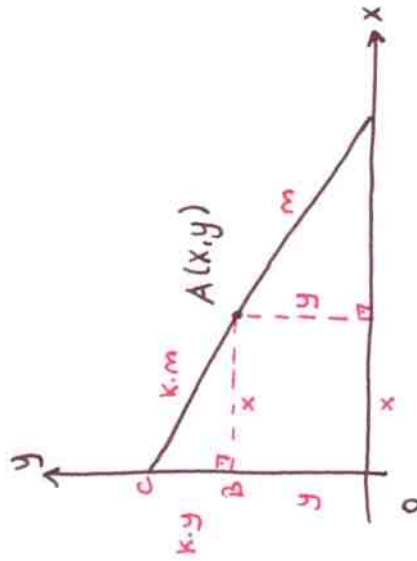
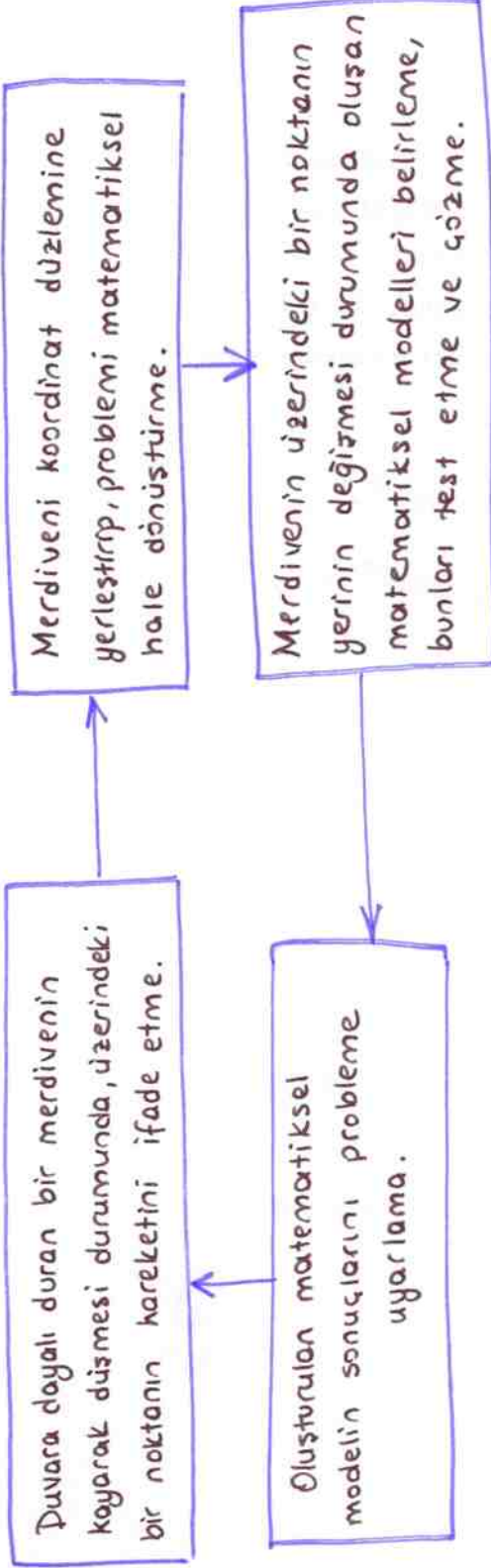


MERDİVEN PROBLEMİ



$\triangle ABC$ 'de pisagor teoreminden;

$$(ky)^2 + x^2 = (km)^2$$

$$\frac{k^2y^2 + x^2}{k^2m^2} = \frac{k^2m^2}{k^2m^2}$$

$$\frac{y^2}{m^2} + \frac{x^2}{(km)^2} = 1$$

$$\frac{x^2}{(km)^2} + \frac{y^2}{m^2} = 1$$

* $k=1$ için $\frac{x^2}{m^2} + \frac{y^2}{m^2} = 1$ çemberi

* $0 < k < 1$ için asal eksenli y eksenli üzerinde elips

* $k > 1$ için asal eksenli x eksenli üzerinde elips